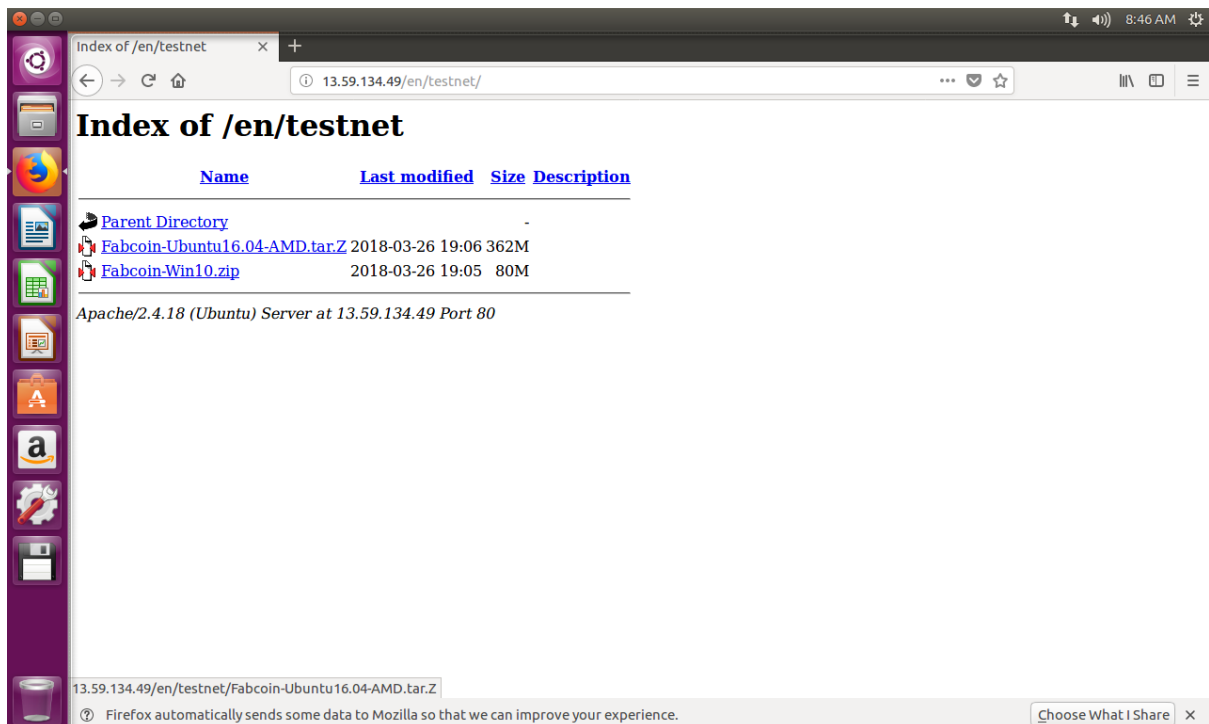


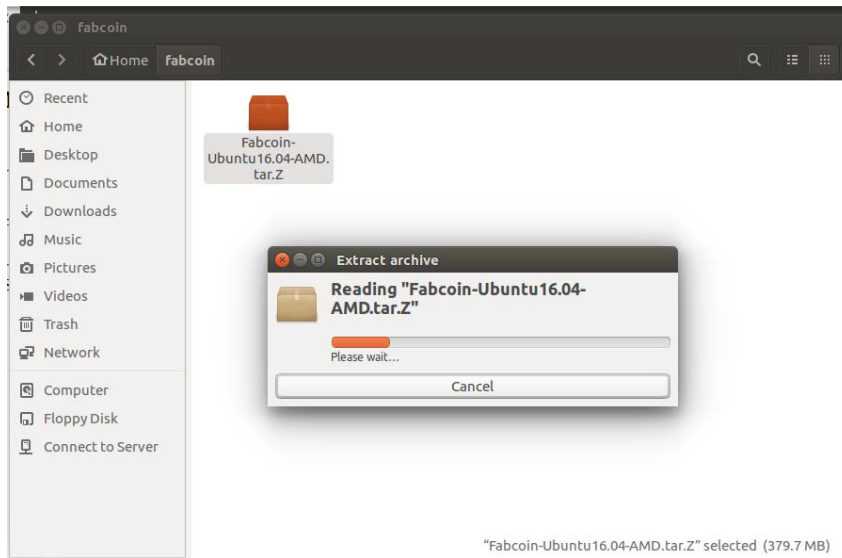
How to setup a fabcoin test environment in Ubuntu environment

Step 1 : *Download*

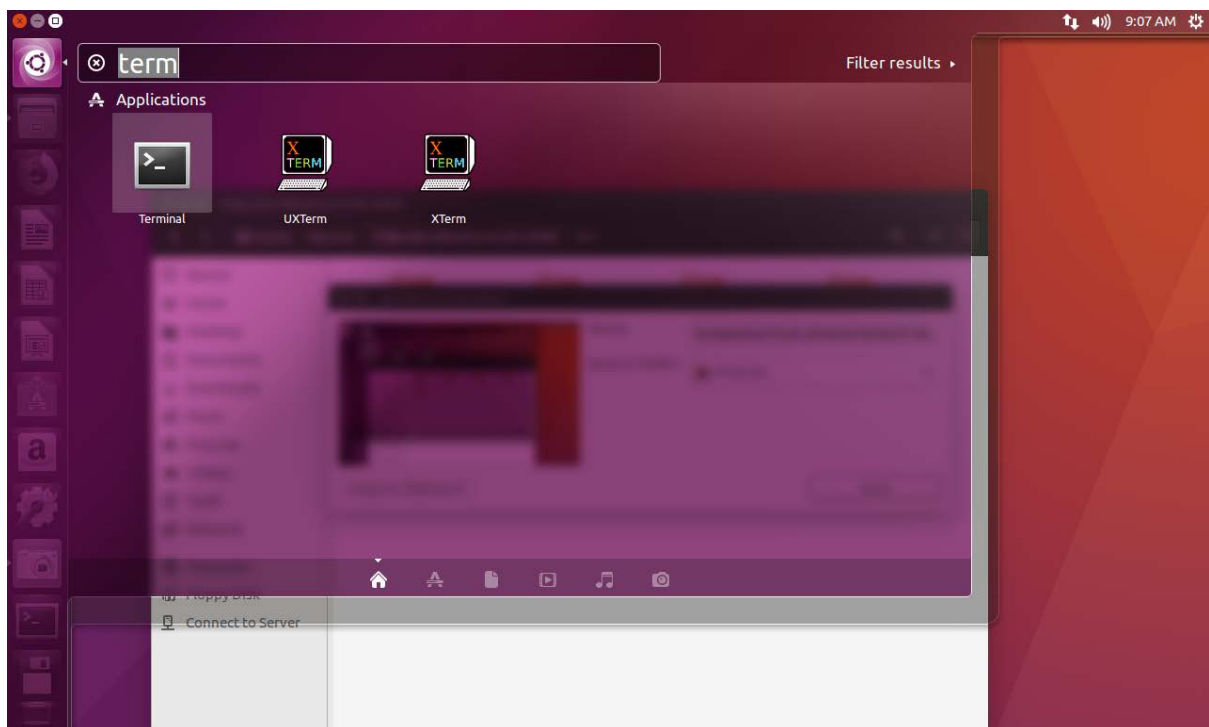
Download Fabcoin Ubuntu 16.04 version from <http://13.59.134.49/en/testnet/Fabcoin-Ubuntu16.04-AMD.tar.Z>,



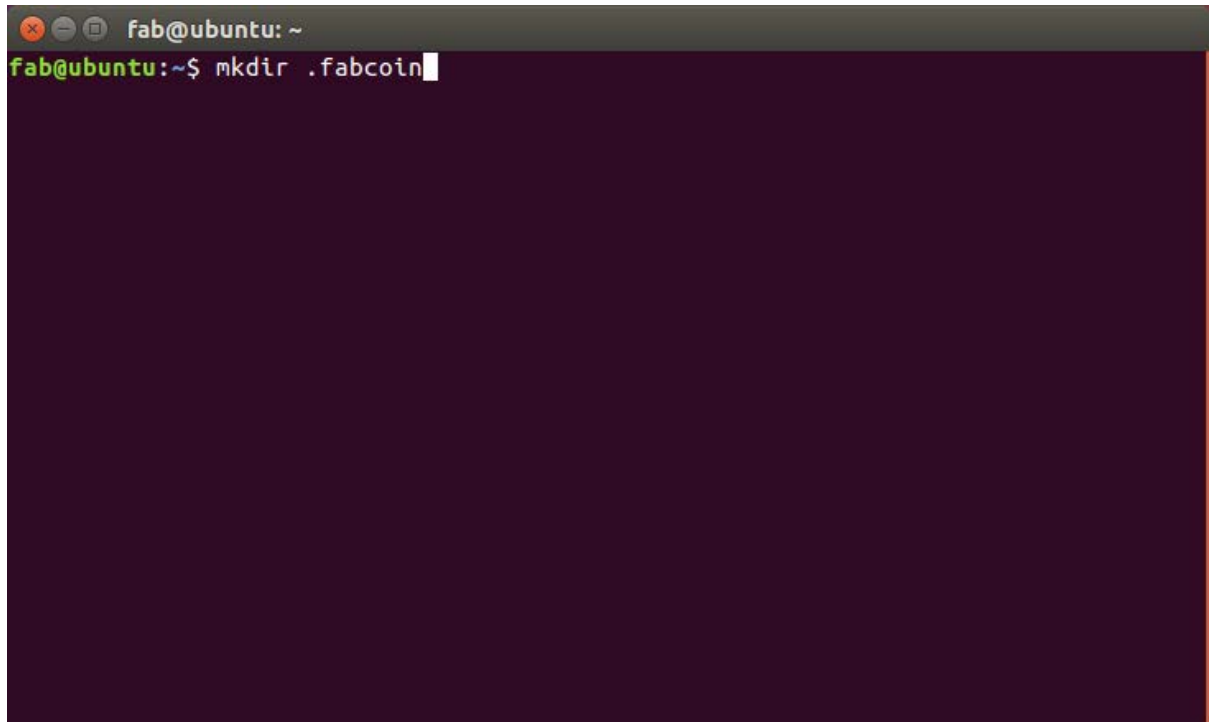
Step 2 : Extract it to \$HOME/fabcoin



Step 3: Go to Terminal

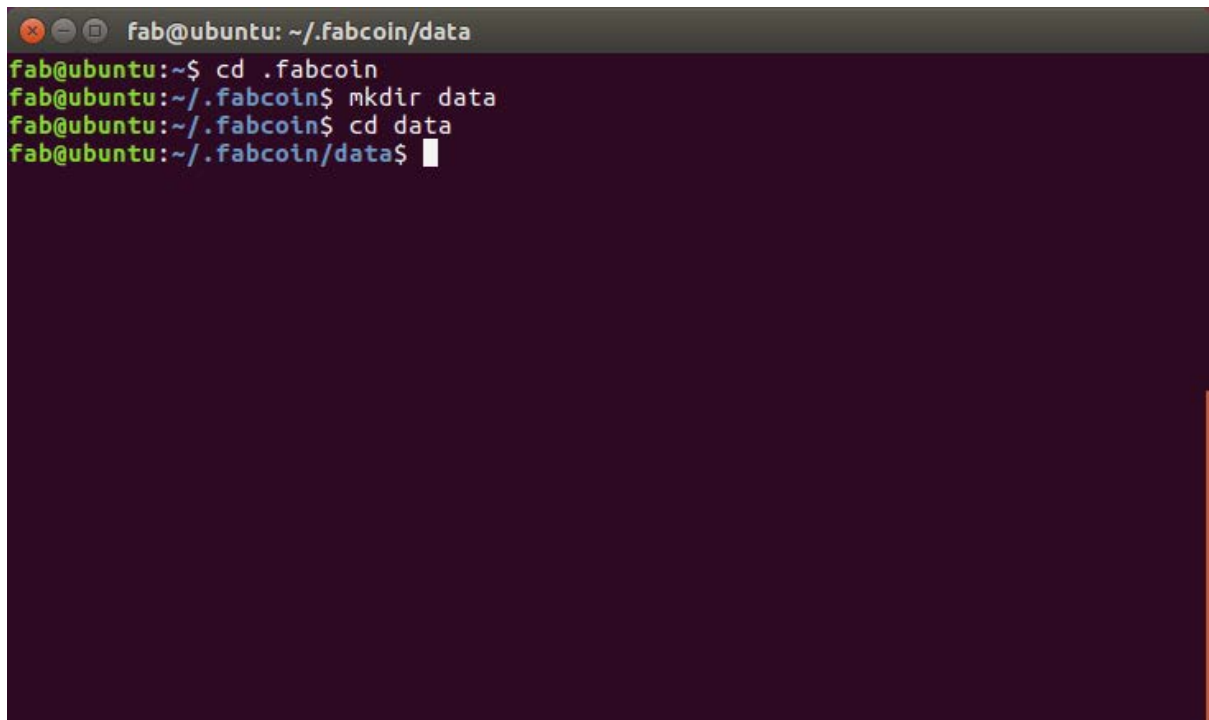


Step 4: Set \$HOME/.fabcoin as default data folder by typing the command shown in screenshot



```
fab@ubuntu: ~  
fab@ubuntu:~$ mkdir .fabcoin
```

Step 5: config file is \$HOME/.fabcoin/data/fabcoin.conf . Create that file by typing the commands as shown



```
fab@ubuntu: ~/.fabcoin/data  
fab@ubuntu:~$ cd .fabcoin  
fab@ubuntu:~/.fabcoin$ mkdir data  
fab@ubuntu:~/.fabcoin$ cd data  
fab@ubuntu:~/.fabcoin/data$
```

```
fab@ubuntu: ~/.fabcoin/data
fab@ubuntu:~/.fabcoin/data$ vi fabcoin.conf
```

Step 6: Set below content in fabcoin.conf, to specific testnet.

```
testnet=1
```

```
addnode=35.182.160.212
```

```
addnode=13.59.134.49
```

```
gen=1
```

```
G=1
```

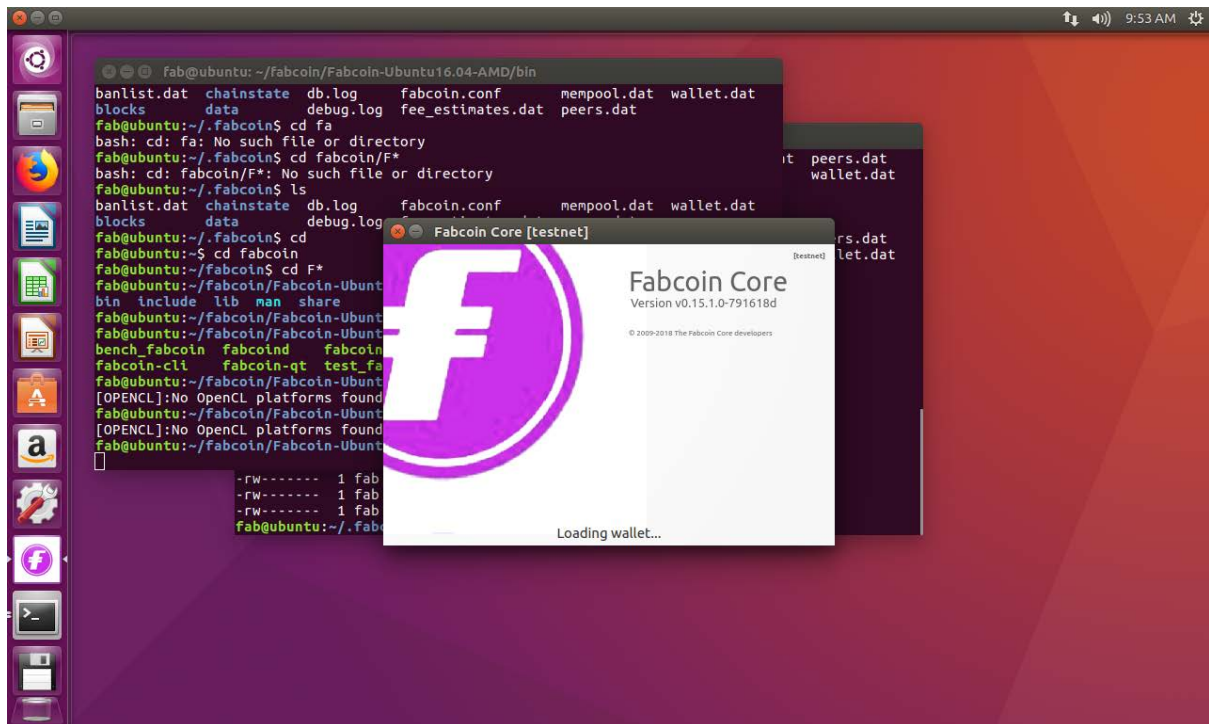
```
allgpu=1
```

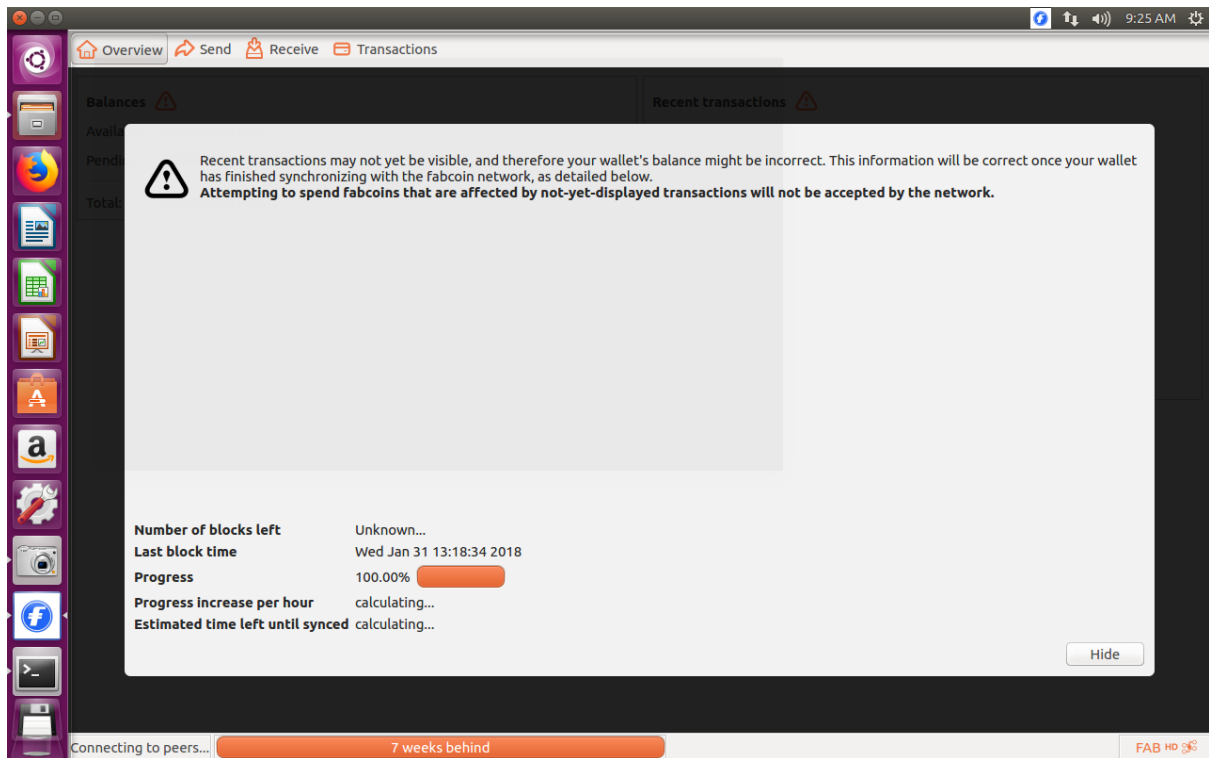

Step 8: Running the wallet program:

Run \$HOME/fabcoin/bin/fabcoin-qt



Program will start





How to config production network?

Production network is similar to testnet, only below difference:

- 1) Please download prodnet software.
- 2) In step 6, change as below:
 - i. Remove testnet=1
 - ii. Use production node ip, such as:
addnode=54.215.244.48
addnode=18.130.8.117